



**METROWEST
COMMERCIAL R.E.**



**AVAILABLE FOR LEASE
OFFICE
MOVE-IN CONDITION !**

**ROUTE 135 ~ 100 WAVERLY
STREET, ASHLAND, MA**

Located just over the Framingham townline, with good access to downtown Ashland, downtown Framingham and not far from Routes 9, 126, 85 & 495.

Closest to Exit 12 Mass Turnpike. Same owners, own 1.77 acre parcel next to 100 Waverly – For Sale **Asking - \$190,000** Commercial zoned.

Available space :

AVAILABLE NOW:

Suite 102: 900 s.f. - Entrance from first floor lobby, large open room, interior bath, 2 private offices and storage closet. Contiguous to Suite 103 and now open to Suite 103.

Suite 103: 1,693 s.f. – currently afterschool enrichment program space. Five (5) to six (6) offices with glass window partitions and easy to get to and very large open area and reception area. Private bath.

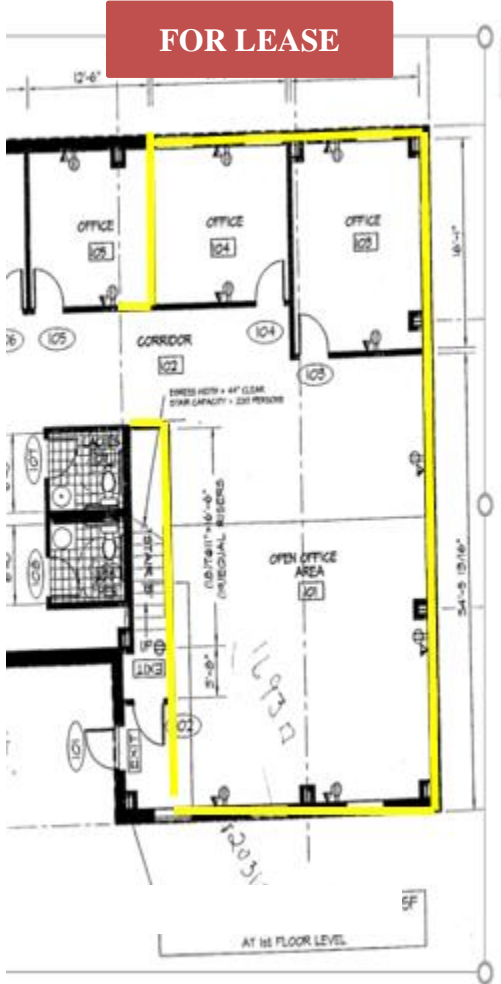
ASKING - \$16.50/s.f. + utilities for individual suites

**Listing Brokers: MARLENE ARON/MWCRE & JONATHAN GORDON/GORDON R.E.
508-740-0000 – cell or 508-245-9728**

ma@metrowestcre.com www.metrowestcre.com

*The above information is from sources deemed reliable but cannot be guaranteed to be completely accurate.
Prospective Lessees are advised to verify information. MWCRE represent the Lessor & Gordon RE.
MWC RE & Gordon RE does not co-broke with Principals nor recognize representation after the first showing.*

ROUTE 135 ~ 100 WAVERLY STREET, ASHLAND, MA



Note : Above plan may not show the exact current configuration and should be verified by the Lessee prior to lease negotiations.



1.77 ACRE COMMERCIAL LOT - **ASKING \$190,000.**
90 WAVERLY ST., ASHLAND. ABUTS 100 WAVERLY ON WESTSIDE



Listing Brokers: MARLENE ARON/MWCRE & JONATHAN GORDON/GORDON R.E.
508-740-0000 – cell or 508-245-9728 - cell

ma@metrowestcre.com www.metrowestcre.com

*The above information is from sources deemed reliable but cannot be guaranteed to be completely accurate.
Prospective Lessees are advised to verify information. MWCRE represent the Lessor & Gordon RE.
MWC RE & Gordon RE does not co-broke with Principals nor recognize representation after the first showing.*